






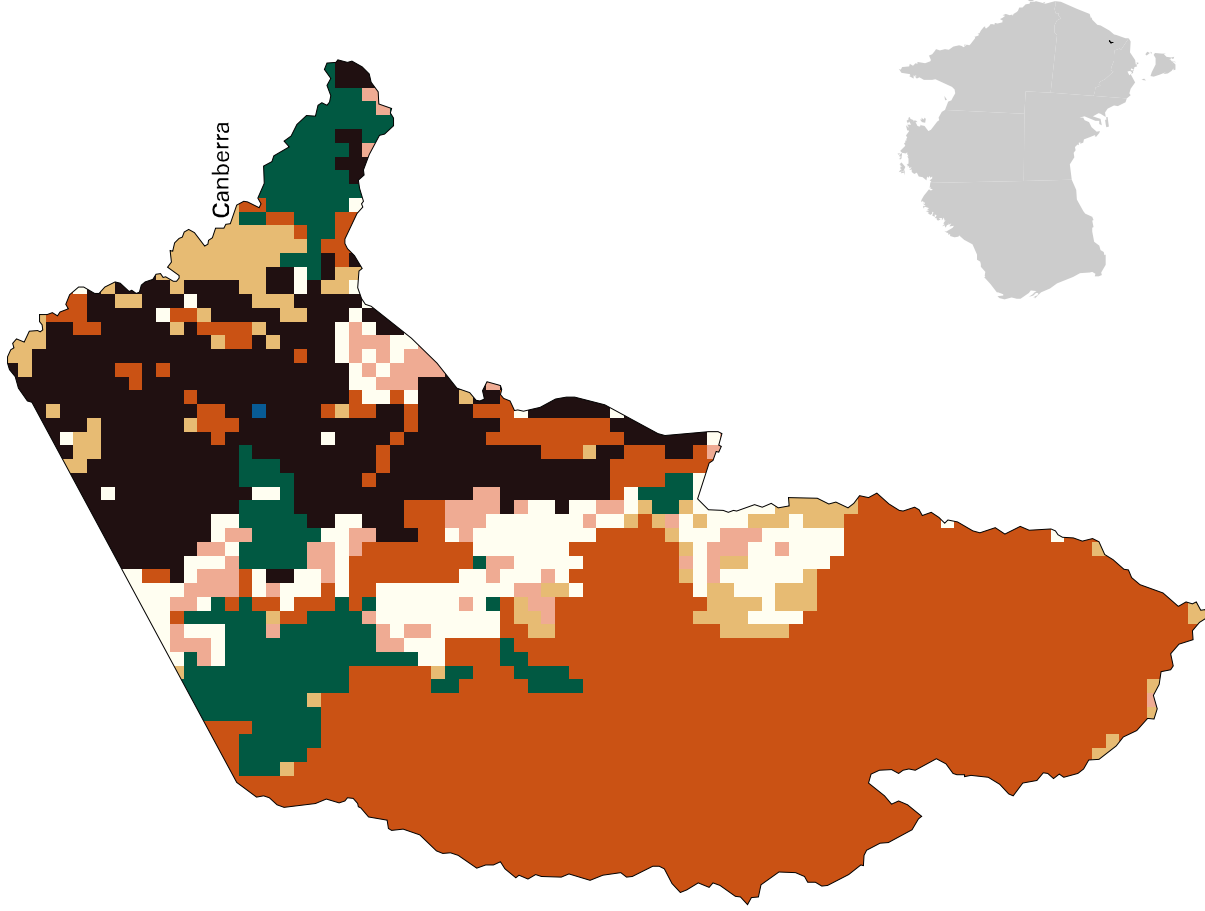


Land Use in Australian Capital Territory

-  Nature conservation
-  Minimal use
-  Livestock grazing
-  Forestry
-  Dryland agriculture
-  Built environment
-  Waterbodies not elsewhere classified



The data set was derived and compiled by the Bureau of Rural Sciences. Land uses were derived using data from the 1997 and 1999 Collaborative Australian Protected Areas Database (Environment Australia), TOPO-250K Version 1 (AUSLIG), the National Forest Inventory 1997 tenure and forest data, Normalised Difference Vegetation Index images (Environment Australia) and AgStats 1996/97 (Australian Bureau of Statistics). Control sites provided by state and territory agencies: NSW Agriculture, Victorian Dept of Natural Resources and Environment, Queensland Dept of Natural Resources and Mines, Primary Industries and Resources SA, Agriculture Western Australia, Tasmanian Dept of Primary Industries, Water and Environment, Northern Territory Dept of Lands, Planning and Environment.

Source:
1996/97 Land Use of Australia Summary
and 1996/97 Land Use of Australia, Version 2,
National Land and Water Resources Audit

